

LED Light Source System

IPL-L100 series Digital Color Viewer



Product Features

- White LED Light Support or RGB LED Light Support
- View Area : 190*250mm
- Light Control button Function
- LCD Light Brightness Display
- Color Temp. : under2300k,3000k,5000k,
over20000k (±5%)
- Brightness : Over 30,000Lux(Surface) or Customizing
- Uniformity : Over 85%
- Automatic Temperature Controller
- RS232C PC Interface
- AVIS Light Controller Software (For RS232C)
- AC100~250V Input. 50/60Hz

SPECIFICATION

MODEL	IPL-L100W	IPL-L100RGB
View Area	190*250mm	
Brightness	Over 30,000Lux(Surface)	Over 15,000Lux(Surface)
Color Temperature	under2300k~over20000k	R/G/B
Uniformity	Over 85%	
Fan Control	Automatic or User setting	
PC Interface	RS232C	
Display	128*64 Dot Graphic LCD	
Power supply	AC100~250V 50/60Hz Input	
Power consumption (W)	Max. 60W(at Total on)	
Operating Temperature	-10°C ~ +50°C	
Dimension	371 * 326 * 126 (WHD, mm)	

LED Light Source System

IPL-L100 series Digital Color Viewer



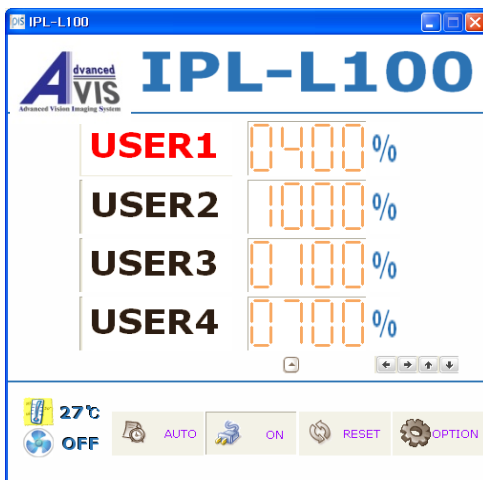
• Introduction

- ◇ With the standard illuminant which provides an fixing color temperature differently, it will be able to express a many kinds color temperature and color coordinates.
- ◇ No flicker because of using a digital constant current control method.
- ◇ Test the shading without the chart due to high uniformity of the standard illuminant.

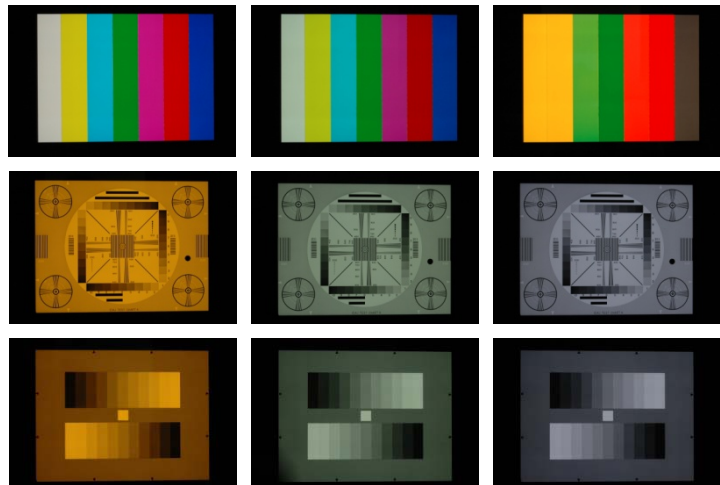
• Use field of product

CCTV Analog Camera / USB PC Camera / Mobile Camera / Web Camera /
Digital Camera / Lens Inspection etc.

• PC Control program



• Color temperature image



- It can change the specification without any notice for the quality improvement.

YOJET CO., LTD.

Tel:886-2-2729-2660

Fax : 886-2-2729-2552

<http://www.yojet.com.tw>

kevin@yojet.com.tw

